

# Association of Basic Science Teachers in Dentistry

## School of Dentistry

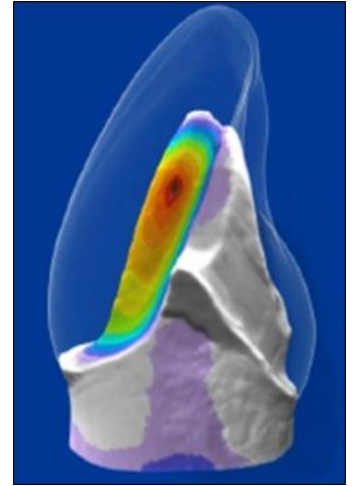
University of Dundee, Park Place, Dundee DD1 4HN.

Almond Room – Dundee Dental Education Centre (DDEC)

Tuesday 1<sup>st</sup> May 2018

## Integrating and Interfacing of Sciences in Dentistry and the Wider Academic Community

---



**1000** Tour of Theil facility tour Centre for Anatomy and Human Identification  
(Assemble in the DDEC foyer at 0955)

**1100** ABSTD Committee Meeting

**1230** Lunch and Annual General Meeting

**Main Meeting** (Chair: Dr Jon Bennett, President ABSTD)

**1400** Introduction and Welcome  
Prof Mark Hector, Dean of Dentistry

**1410** Theil – integrating biology with clinical practice  
Dr Mike Macluskey, University of Dundee

**1425** Integrating and interfacing using medical art and technology  
Dr Andrew Mason, University of Dundee

**1440** Student engagement with research and evidence  
Prof Peter Mossey and DRAMS student

**1455** Tooth morphology – tooth carving - a new approach to an old favourite  
Dr Bana Abdulmohsen, University of Newcastle

**1510** Coffee

**1530** Forensic Odontology and dental anatomy  
Dr Sheila Manica, University of Dundee

**1545** Non-clinical PGT programmes - is the reward worth the effort?  
Prof Gordon Ramage, University of Glasgow

**1600** Discussion and Concluding Remarks

## Travel

Dundee has frequent rail services to Edinburgh and Glasgow. There are also direct rail services to London and the South.

There are major international airports in Edinburgh and Glasgow. In Edinburgh there is a new station 'Edinburgh Gateway' station sited a short tram ride from the airport. This has direct links to Dundee and eliminates the need to make a rail connection in Edinburgh city centre.

Dundee has a small airport and there are direct albeit infrequent flights to London Stanstead.

The venue is approximately 15 minutes' walk from the railway station

## Accommodation

There are two hotels recommended by University of Dundee staff close to the venue....

(1) the Hilton (Hampton Inn by Hilton: 4-5 mins walk)

1 Argyllgait, Dundee DD1 1PZ

Tel: 01382 725200

<http://hamptoninn3.hilton.com/en/hotels/united-kingdom/hampton-by-hilton-dundee-city-centre-DNDHXHX/index.html>

(2) the Malmaison (7-10 mins walk)

44 Whitehall Crescent, Dundee, DD1 4AY, United Kingdom

Tel: 01382339715

[https://www.malmaison.com/locations/dundee/?gclid=EAlaIQobChMlVlH8nI682QIVFGYbCh05XQD0EAAYAiAAEgIDm\\_D\\_BwE](https://www.malmaison.com/locations/dundee/?gclid=EAlaIQobChMlVlH8nI682QIVFGYbCh05XQD0EAAYAiAAEgIDm_D_BwE)

## Monday 30<sup>th</sup> of April

We hope to arrange a small informal meal for any attendees arriving in Dundee on Monday 30<sup>th</sup> of April – details to follow.

## Registration

Registration for the meeting will be £15.00. This is payable in advance using the 'PayPal' facility on our website or 'on-site'. The Registration fee will be waived for Undergraduate Dental Students, Postgraduate Students, Dental Postgraduate Trainees and University of Dundee staff. All attendees are asked to complete the attached Registration form and send it to the President of the Association

([jon.bennett@plymouth.ac.uk](mailto:jon.bennett@plymouth.ac.uk)) as an e-mail attachment.